



Technical Data Sheet



Printer Specifications

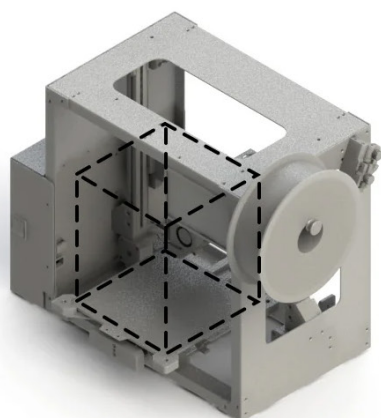
3D Printing Technology.....	Fused Filament Fabrication (FFF)
Build Volume.....	180 x 180 x 180 mm ³ (7.09 x 7.09 x 7.09 in ³)
Movement System.....	CoreXZ - GT2 Belt Drive, Linear Rails X,Y, & Z
Operating Temperature Range.....	From 5°C to 45°C (41°F to 113°F)
Maximum Travel Speed.....	500mm/s (Firmware Limited)
Bed Leveling System.....	Automatic BLTouch 25-Point Mesh or Adaptive to Print Area
Calibration.....	Intelligent X-Axis Trimming, Z-Offset, and Input Shaping
Connectivity	Wi-Fi, Ethernet, Includes 16GB Flash Drive for Standalone Printing
Mainboard	32-bit Manta 5 with Trinamic Drivers
Enclosure.....	Mini 3 Enclosure Available for Purchase

Print Bed Surface.....	Magnetic Flex Bed System
Print Bed Heater.....	109W 24V Silicon
Maximum Print Surface Temperature.....	Up to 100°C (212°F)

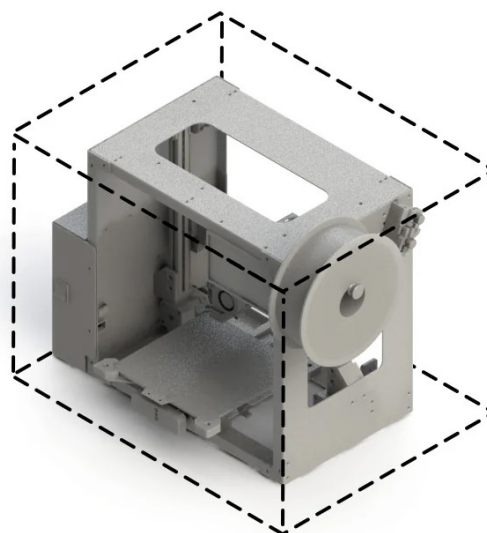
Standard Equipped Layer Resolution.....	0.1 (100 microns) to 0.4mm (400 microns)
Minimum Possible Layer Resolution.....	0.05 mm (0.002 in) with Optional Nozzle Kit
XYZ Positional Resolution.....	X, Y, & Z axis - 0.0025mm (2.5 microns)

Factory Equipped Tool Head

Default Tool Head.....	Meteor 285
Nozzle Diameter.....	0.5 mm
Filament Diameter.....	2.85 mm
Maximum Extrusion Rate.....	18.1 mm ³ /s (77 g/hr)
Nozzle Material.....	Nickel Plated Brass
Nozzle Temperature.....	Up to 290°C (554°F)
Additional Tool Heads Available - See Next Page	



Print Area
180 x 180 x 180 mm³
(7 x 7 x 7 in³)



Operating Footprint
600 x 460 x 460 mm³
(23.5 x 18 x 18 in³)

Galaxy Tool Head Options

Galaxy Series Tool Heads are built to be user friendly and reliable. Quick filament loading and repeatable tension settings save time and reduce errors. Its compact design ensures quiet operation, stable print temperatures, and easy nozzle swaps—maximizing uptime and print quality.

Meteor 285 | Nickel Plated Brass | 0.5 mm

Superior TPU and flexible filament compatibility.

Meteor 175 | Nickel Plated Brass | 0.5 mm

Print a wide variety of materials and colors, with ease.

*Asteroid 285 | GammaMaster® | 1.2 mm

Design, print, and iterate large 3D prints at incredible speed with this high-output Tool Head.

*Twin Nebula 175 | Nickel Plated Brass | 0.5 mm

True multi-material printing with the widely available 1.75mm filament. Great for use with PVA supports or combining rigid and flexible materials.

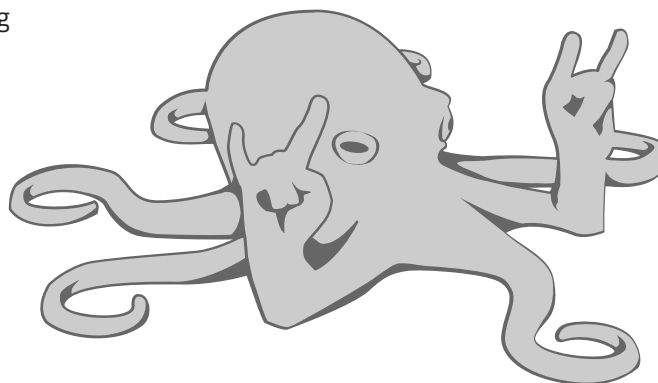
*Twin Nebula 285 | Nickel Plated Brass | 0.5 mm

True multi-material printing with 2.85mm filament for superior TPU performance. Great for use with PVA supports or combining rigid and flexible materials.

**Not compatible with Mini 3*



Scan the QR code
for Tool Head models



Material Compatibility

Open filament system capability PLA, TPU, ABS, PETg,
PVA, PVB, Nylon, PC,
and others below 290°C

Software

Operating System Capability Windows, Mac, GNU/Linux
Recommended Software Cura LulzBot Edition, Version 4.13 or newer
Firmware Klipper
Supported File Typesstl, .3mf, .obj, .x3d

Electrical

Power Requirements 100VAC - 240VAC
Output 24 volt DC, 150 watts, 6.25 amps
Power Supply 150W 24V Delta, Auto-Switching

Safety and Compliance

Certifications Available upon Request
Warranty Includes one-year warranty and access to technical support five days a week.
Optional one, two, or three-year extended warranties available.
Country of Origin USA - Fargo, ND

701-809-0800 | sales@LulzBot.com | LulzBot.com

LulzBot is a registered trademark of Fargo Additive Manufacturing Equipment 3D, LLC.